



BF-TD506

DMR Portable Radio



Commercial business digital radio BF-TD506 dedicated to business users, such as hotel, shopping mall, warehouse, security etc. AMBE+2™ vocoder and FEC technology supply superior HD voice quality and with automatically received mode reply function BF-TD506 is a smart way to grow into digital radio.



- ❏ Digital/analog mixed mode in the same channel, smooth migration from analog to digital.
- ❏ Double spectrum capacity with DMR 2 slot in a 12.5KHz channel.
- ❏ Intergrated voice and data.
- ❏ Affordable for users who need economic digital communication solution.

Features

Main Features

- TOT
- Scan
- Monitor
- Digital/Analog Dual Mode
- Auto Battery Saving
- Low Battery Alert
- Encryption

Digital Features

- Private Call
- Group Call
- All Call
- SMS
- DMR Direct Mode TDMA
- Radio Check
- PTT ID
- Remote Kill/Revive
- Remote Monitor

Analog Features

- CTCSS/DCS
- Squelch Setting
- Narrow/Wide Band
- Talk Around
- Busy Channel Lockout
- VOX



High Lights

Mixed Digital/Analog mode

Receive both analog and digital signals on a single channel and automatically selects the received mode to reply to the received call.

Private call, Group call and all call

Flexible communication for efficient cooperation

Excellent Audio Quality

Excellent digital audio quality with AMBE + 2™ vocoder and FEC technology

DMR Direct Mode TDMA (Ture 2-slot)

2 slot communication in DMO mode, which allows for 2 talk paths on 1 frequency

Small Size and Light Weight

Hold in hand in whole workday without difficulty, easy handle

Long Battery ServiceTime

Withstand whole using don't need charging halfway(digital 18hours,analog 14 hours)

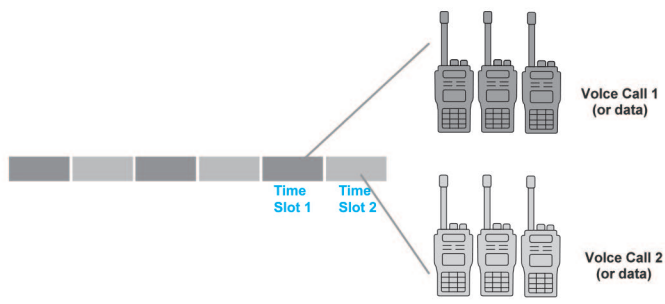
Remote Kill/Revive

Remotely disable function to prevent data& information let out from a missing radio

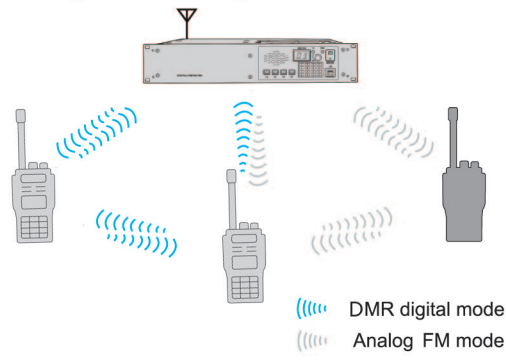
Voice Encryption

Confirm discreet communication with voice encryption function

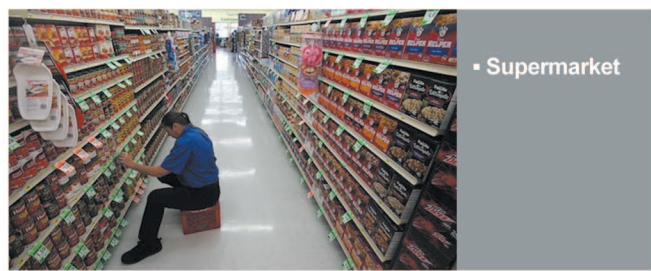
DMR Direct Mode TDMA (Ture 2-slot)



Digital/Analog Mixed mode




Applications



Standard Accessories

				
Battery	Belt Clip	Hand Strap	Stubby Antenna	Charger

Optional Accessories

	
Programming Cable	Earpiece

Specification

General	
Frequency range	UHF: 400~480MHz
Channel Capacity	1024
Zones	64
Channel Spacing	12.5KHz
Voltage	DC 7.4V (±20%)
Frequency stability	±1.5ppm
Antenna impedance	50Ω
Battery Average Working Time (5/5/90)	Digital 18 hours; Analog 14 hours
Weight	239g
Battery capacity	Real 1800mAh (Li-pol battery)
Dimension	57 (L) *30 (W) *105(H)mm
Transmitter	
Power Output	High power: 5W Low power: 1.0W
4FSK Modulation	12.5kHz (only data): 7K60FXD; 12.5kHz (data and voice): 7K60FXE
FM Modulation	12.5 kHz: 8K50F3E;
Modulation Limitation	+/- 2.5kHz @ 12.5kHz; +/- 5kHz @ 25kHz
FM Noise	-40dB
Conducted Emission	-36 dBm≤1GHz/-30 dBm≥1GHz
Adjacent Channel Power	≤-60dB
Audio Response	+1/-3 dB
Audio Distortion	<3%
Digital Voice coder Type	AMBE+2™
Receiver	
Digital sensitivity	5% BER: 0.25 uV
Analog sensitivity	0.25 uV (12 dB SINAD)
Intermodulation	60dB
Adjacent Channel Selectivity	60 dB
Spurious Response Rejection	60 dB
FM Noise	-40dB
Audio Response	+1/-3 dB
Audio output	1.5W
Audio Distortion	3% (typical)
Conducted Spurious Emission	-57dBm
Environmental Specifications	
Working Temperature	-20℃ ~+60℃
Storage Temperature	-30℃ ~+85℃
Water proof	IP54

Belfone reserve the right to change any specifications without warning due to the technology improvement. For more information, please visit www.belfone.com



ISO 9001:2008
ISO 14000:2004
OHSMS18000
certified



To order in your local place, please contact: